

**JUNQUAN**<sup>®</sup>  
JUNQUAN AUTOMATIC

ZHEJIANG JUNQUAN

# 产品说明书

Product Specifications



PF-3  
自动送线器

浙江钧泉自动化设备有限公司  
ZHEJIANG JUNQUAN AUTOMATION CO.,LTD

---

|  |   |
|--|---|
|  |   |
|  |   |
|  |   |
|  |   |
|  | ± |
|  |   |
|  |   |
|  |   |
|  |   |

Preface

Catalogue

1. PF-3( parallel wire )feeder exterior structure

1 The front view of the machine

2 Component details of front view

3 The back view of the machine

4 Component details of back view

2. PF-3( single wire )feeder exterior structure

1 The front view of the machine

2 Component details of front view

3 The back view of the machine

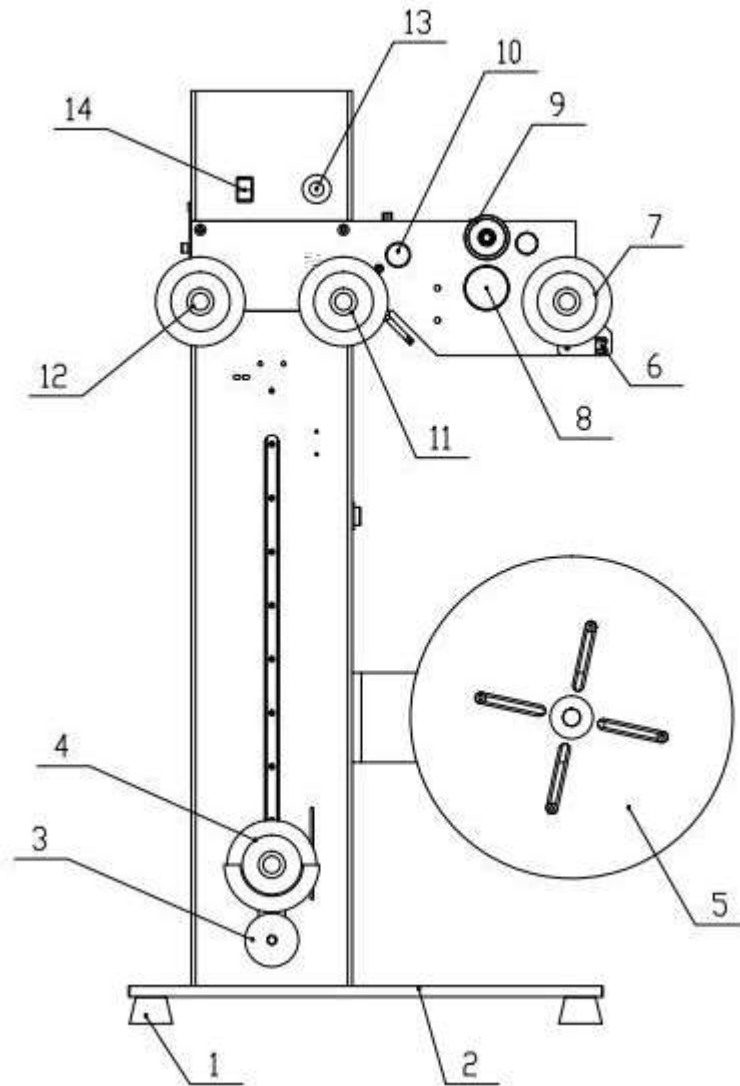
5 Component details of back view

3. Operating instruction

4. Wiring diagram

1. PF-3( parallel wire )feeder exterior structure

1. The front view of the machine

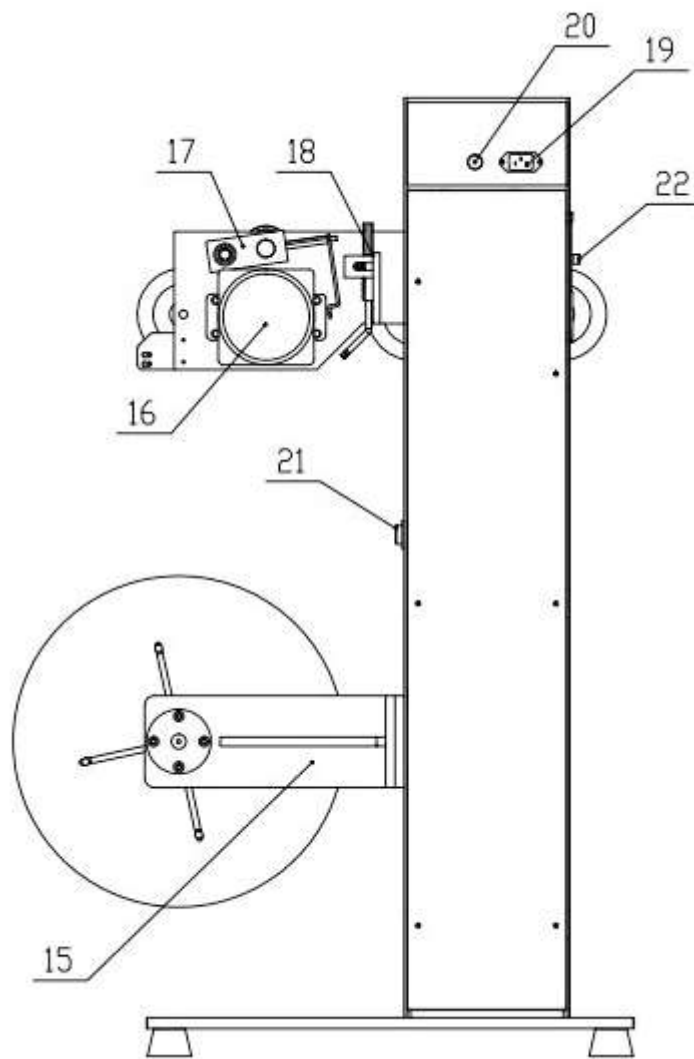


2. Component details of front view

|  |  |  |  |  |  |
|--|--|--|--|--|--|
|  |  |  |  |  |  |
|  |  |  |  |  |  |

|  |  |  |  |  |  |
|--|--|--|--|--|--|
|  |  |  |  |  |  |
|  |  |  |  |  |  |
|  |  |  |  |  |  |

3. The back view of the machine



4. Component details of back view

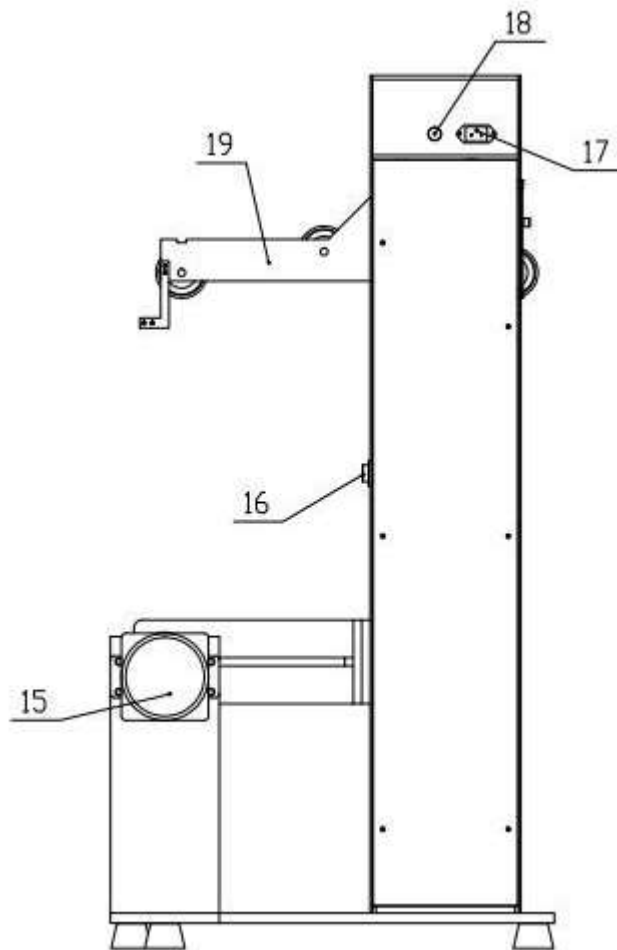
|  |  |  |  |  |  |
|--|--|--|--|--|--|
|  |  |  |  |  |  |
|--|--|--|--|--|--|

|  |  |  |  |  |  |
|--|--|--|--|--|--|
|  |  |  |  |  |  |
|--|--|--|--|--|--|

2. Component details of front view

|  |  |  |  |  |  |
|--|--|--|--|--|--|
|  |  |  |  |  |  |
|  |  |  |  |  |  |
|  |  |  |  |  |  |
|  |  |  |  |  |  |
|  |  |  |  |  |  |

3. The back view of the machine



---

4. Component details of back view

|    |                                  |    |                                  |    |                            |
|----|----------------------------------|----|----------------------------------|----|----------------------------|
| 15 | Motor                            | 16 | The Plug connects to the motor   | 17 | AC220V 3 phase power plugs |
| 18 | Base for keeping the safety tube | 19 | Support board of wire feed plate | 20 |                            |

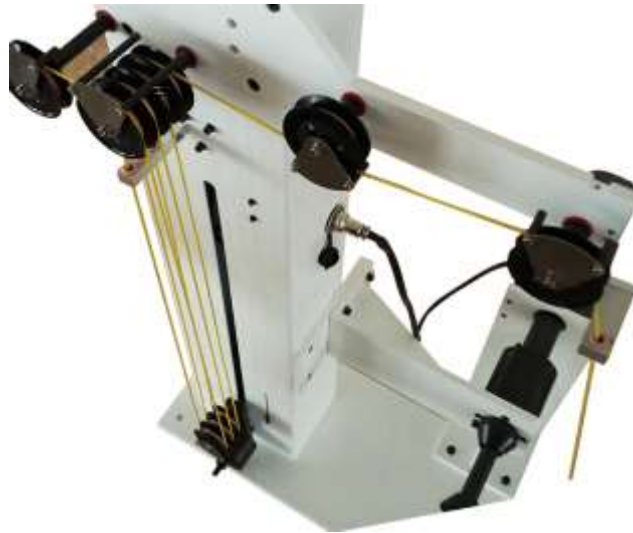


1 Pull out *the button for adjusting the pressure(10)*, at the same time roll it in the counter clockwise for half circle, then push it back to the former position. Pull out the wire to go through *upper roller for feed the wire(7)*, *objective wire feed roller(9)*, *upper roller for feed the wire 1(11)* and *lower roller for feed the wire(4)*, then go back to *upper roller for feed the wire 2(12)*. Then pull out *the button for adjusting the pressure(10)* again and roll it in the clockwise to adjust the pressure, adjust the 1/4 circle for single line, and 1/2 circle for more.

2 Insert the power plug into the socket of AC220V± 10% which behind the machine. Then turn on the *main switch 14* and the *emergency stop switch (13)*.

3 When *lower roller for feed the wire(4)* rises up, the lower check sensor will get the signal and output it in the same time. The signal will make the motor the run and start to feed the wire. When lower roller for feed the wire(4) come near to upper roller for feed the wire 1 (11) and upper roller for feed the wire 2 (12), the upper check sensor will get the signal and output it in the same time. The signal will make the motor stop. *Plate for feed the roller(5)* control the inertia of the plate, and it also can control other devices to stop at the same time.

4 Method of winding



Pi c. 5 Sketch map of wi ndi ng

---

|  |  |
|--|--|
|  |  |
|  |  |
|  |  |
|  |  |

